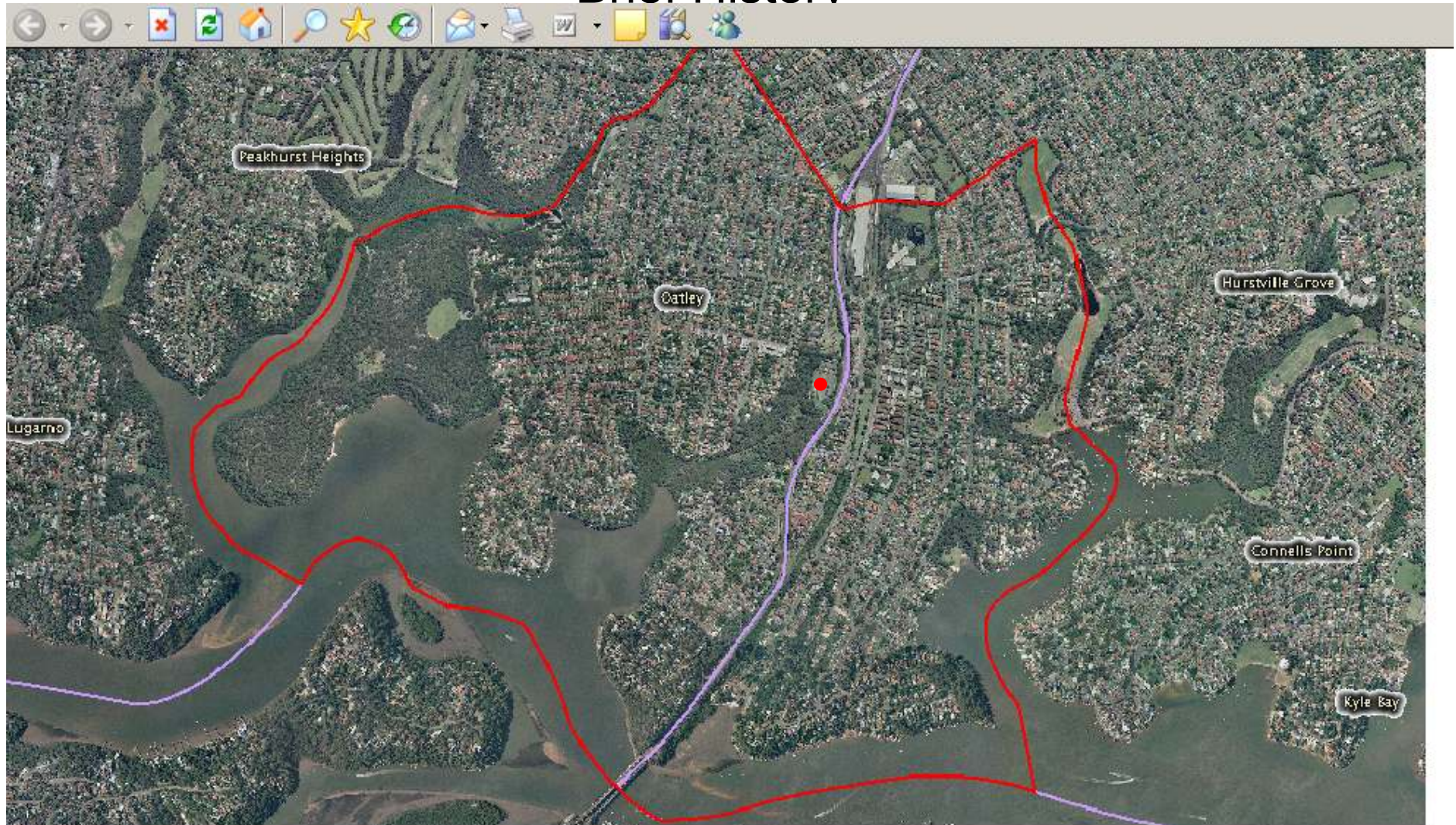


# Myles Dunphy Reserve Former Oatley Bowling & Recreation Club Site. Brief History



Scale 1:20093 1km

Source - NSW Department of Lands SIX Viewer @[six.nsw.gov.au](http://six.nsw.gov.au)

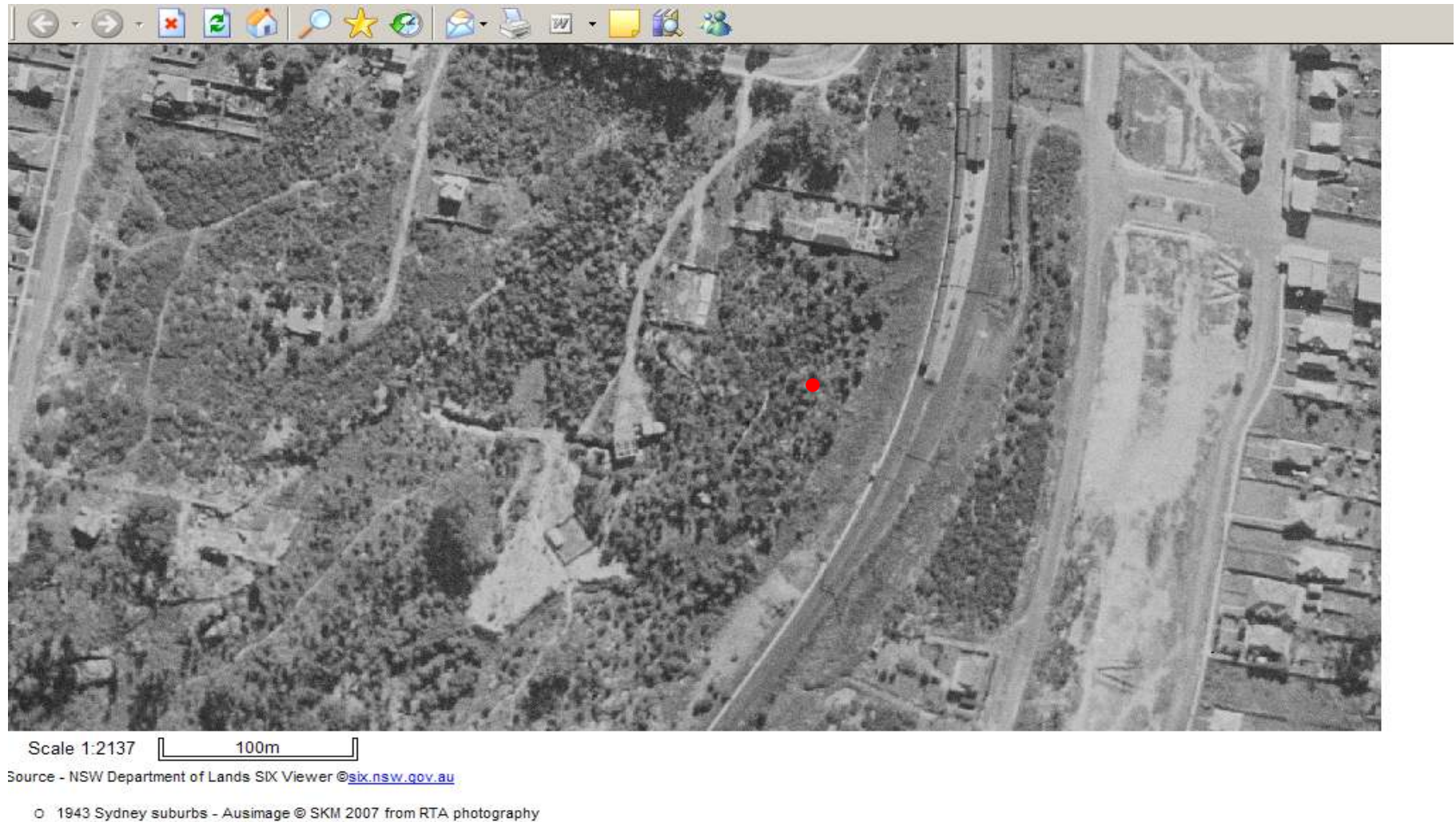
© Sydney - Newcastle Aerial photos (High Resolution) - Ausimage © SKM 2008

## Oatley Boundaries



# Myles Dunphy Reserve

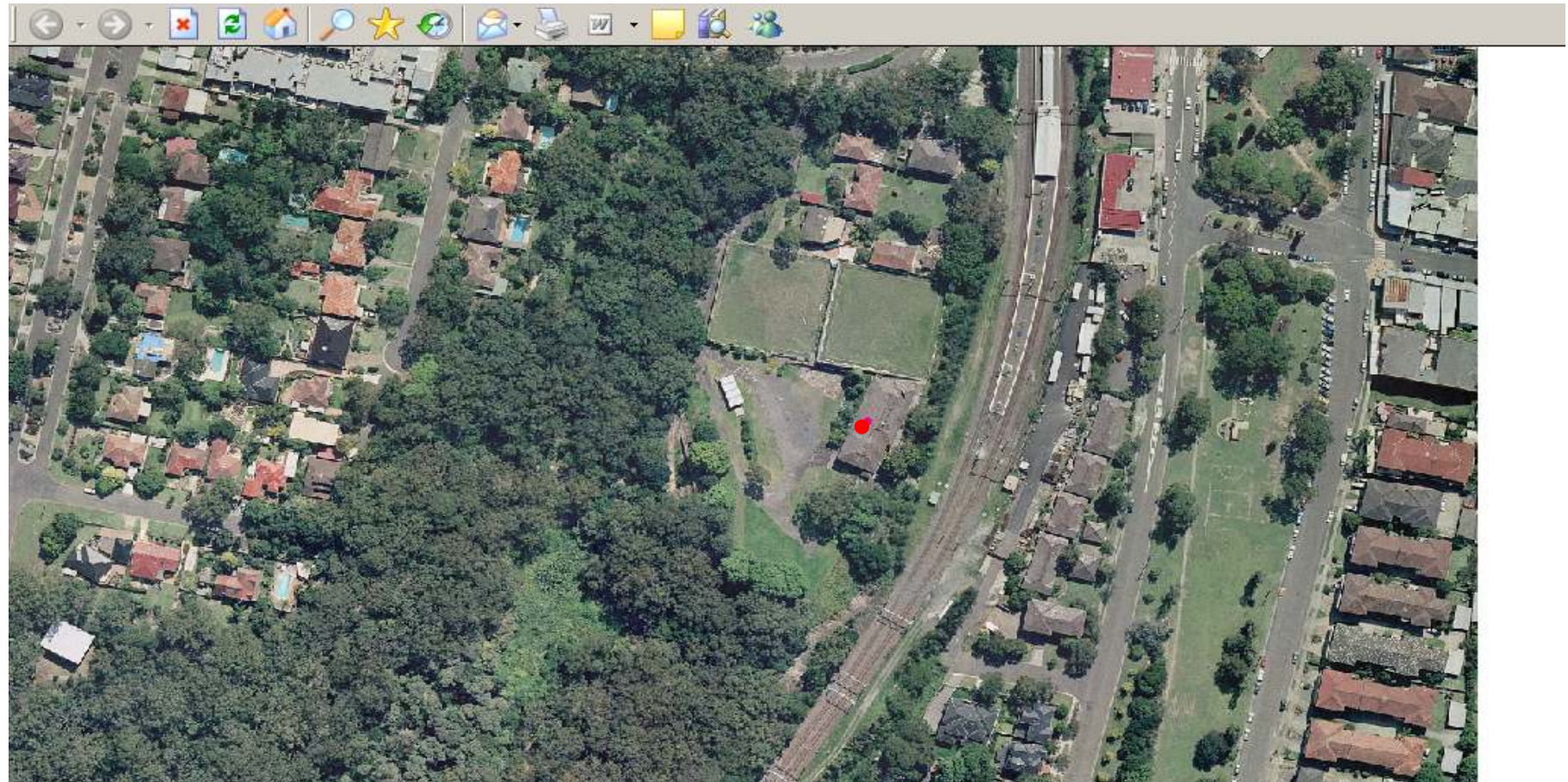
## Former Oatley Bowling Club Site 1943





# Myles Dunphy Reserve

## Former Oatley Bowling Club site 2007



Scale 1:2122  100m

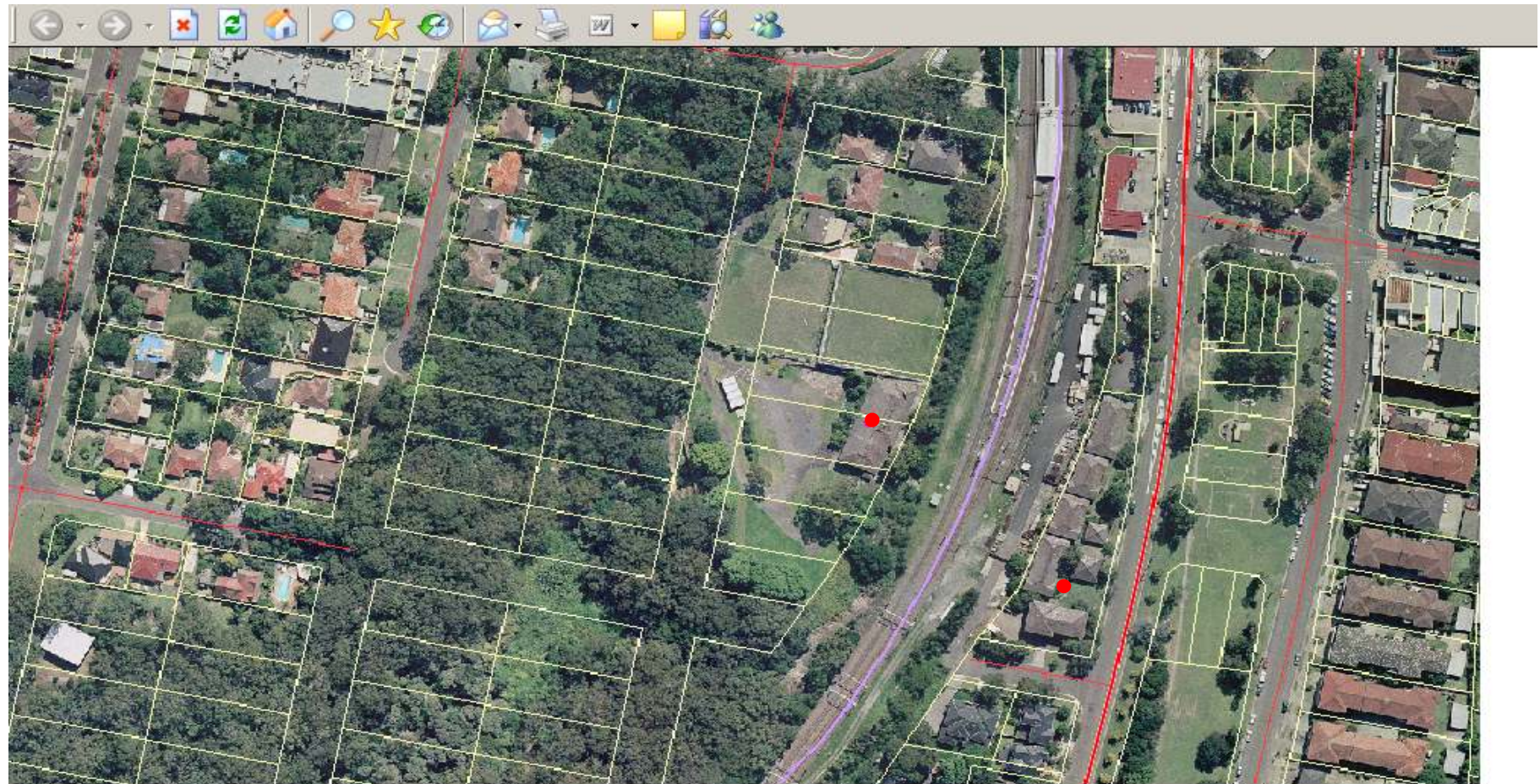
Source - NSW Department of Lands SIX Viewer @ [six.nsw.gov.au](http://six.nsw.gov.au)

○ Sydney - Newcastle Aerial photos (High Resolution) - Ausimage © SKM 2008



# Myles Dunphy Reserve

## Former Oatley Bowling Club site 2007



Scale 1:2122 100m

Source - NSW Department of Lands SIX Viewer @[six.nsw.gov.au](http://six.nsw.gov.au)

© Sydney - Newcastle Aerial photos (High Resolution) - Ausimage © SKM 2008

Showing property boundaries, roads, council boundary and points of interest,  
eg. Bowling Club site and SEPP 5 development on east side of railway.

# Myles Dunphy Reserve

## Former Oatley Bowling Club site. Brief History

- Area was originally to be sub-divided, but it was difficult to continue Yarran Road to Mulga Road due to swampy conditions.
- Myles Dunphy approached Hurstville Municipal Council with a view to turn the land into a reserve.
- HMC then wanted to resume the blocks of land, but these were owned by servicemen at the second world war.
- Mr J S Sloman who owned No 5 River Road objected to this resumption on the grounds that the owners were absent and fighting for their country.
- The properties were eventually resumed anyway, but on condition that the land was to be zoned as “parkland”. It was gazetted as a “Reserve” (probably before the end of the war).
- Oatley Bowling and Recreation Club held its first meeting in December 1959 (15 minutes after 10 as shown on the clock in front of the clubhouse).]



Myles Dunphy Reserve  
Former Oatley Bowling Club site. Brief History



Garden Clock

# Myles Dunphy Reserve

## Former Oatley Bowling Club site. Brief History



- First clubhouse was built in 1962 as shown on the plaque commemorating its opening near the entrance.
- Finance had been arranged through the Commonwealth Trading Bank and members also invested their own money to pay for the construction of the greens and clubhouse.
- When the Club incorporated in 1960 it had 200 Ordinary Members and 100 Associated Lady Members from both sides of the line.

# Myles Dunphy Reserve

## Former Oatley Bowling Club site. Brief History



Second clubhouse was  
built in 1972



The 25th anniversary of  
the club was  
commemorated in 1985.



# Myles Dunphy Reserve Former Oatley Bowling Club site. Brief History



Club August 2008

# Myles Dunphy Reserve Former Oatley Bowling Club site. Brief History



Club August 2008



# Myles Dunphy Reserve Former Oatley Bowling Club site. Brief History



Gymnasium August 2008

Myles Dunphy Reserve  
Former Oatley Bowling Club site. Brief History



Inside Clubhouse August 2008



## Myles Dunphy Reserve Former Oatley Bowling Club site. Brief History

- Community groups have approached HCC to undertake community consultation.
- Oatley Flora and Fauna have corresponded a number of times expressing concerns about the site in Myles Dunphy Reserve, asking for public consultation and release of the feasibility study, with little concrete response.
- Oatley Lions Club did use the building for 6 to 9 months to store their equipment. Their presence meant that the facility had some security.
- During a quiet time of the year for Lions during winter, vandalising of the club buildings began.
- This damage could have been avoided if Council had made immediate constructive use of the building, eg, community groups.
- In 2006 HCC resolved to undertake a \$70,000 feasibility study to investigate selling the site for approx \$3 million. Not released to public as “commercial in confidence”. Freedom of Information applications refused to date.

# Myles Dunphy Reserve

## Former Oatley Bowling Club site. Brief History

- Oatley Residents Against Overdevelopment (Now Friends of Oatley – FOO) have also written to HCC requesting that the feasibility study be released and presented a petition in March 2007 containing over 400 signatures. This Petition stated:
- The former Oatley Bowling Club site is part of Myles Dunphy Reserve, predominantly bushland which is owned by Hurstville Council, and is zoned 6(a) Open Space.
- We the undersigned:
  - Ask Council to recognise and maintain this site as publicly owned land to continue to be used for public recreational purposes as per the objectives of Zone No. 6(a) - Open Space Zone.
  - Strongly object to the sale and any rezoning of any portion of Myles Dunphy Reserve, named in honour of a former Oatley resident who is regarded as the Father of Conservation in NSW.
  - Urgently call on Council to consult with the community to determine the future community use of the former Oatley Bowling Club site, which is public land.



# Myles Dunphy Reserve

## Former Oatley Bowling Club site.

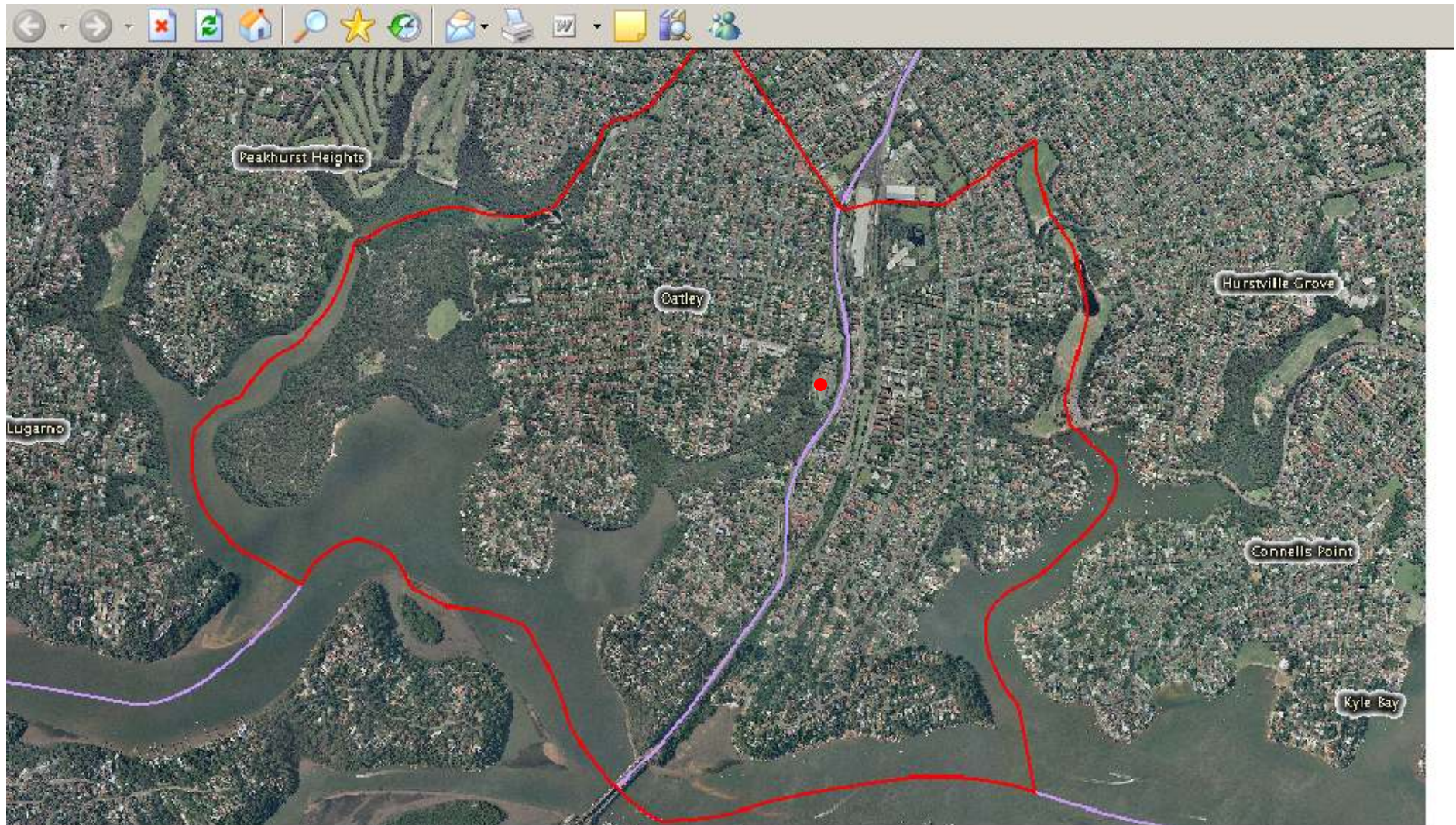
### Brief History

- FOO also asked Oatley residents to indicate uses for the site. These were presented to council in April 2007. To date there has been no response from Council.
- This survey indicated overwhelming support for the area to be used as a bush/park and community facility. More details later in presentation.
- Major concerns that were expressed were the need to avoid damage to the bushland in the Reserve and to not intensify traffic problems in Mulga Road.

# Myles Dunphy Reserve

## Former Oatley Bowling & Recreation Club site.

### Oatley Boundaries



Scale 1:20093

1km

Source - NSW Department of Lands SIX Viewer @ [six.nsw.gov.au](http://six.nsw.gov.au)